



## *Neck Pillow*

For use in the infusion room or at home in the recliner.

*Designed by Kitty Crawford*

### **Materials:**

- One-half yard pre-washed fleece fabric
- Polyfill stuffing
- One set of snaps
- Sewing Needle
- Matching thread

### **Pattern:**

1. There are two main pattern pieces. Make one whole pattern by overlapping the areas marked “overlap” and taping the two pattern pieces together.
2. Cut out two identical pillow patterns on the fold of the fabric.
3. Cut out four snap tabs.

### **Sewing and assembly:**

Use ½" seams

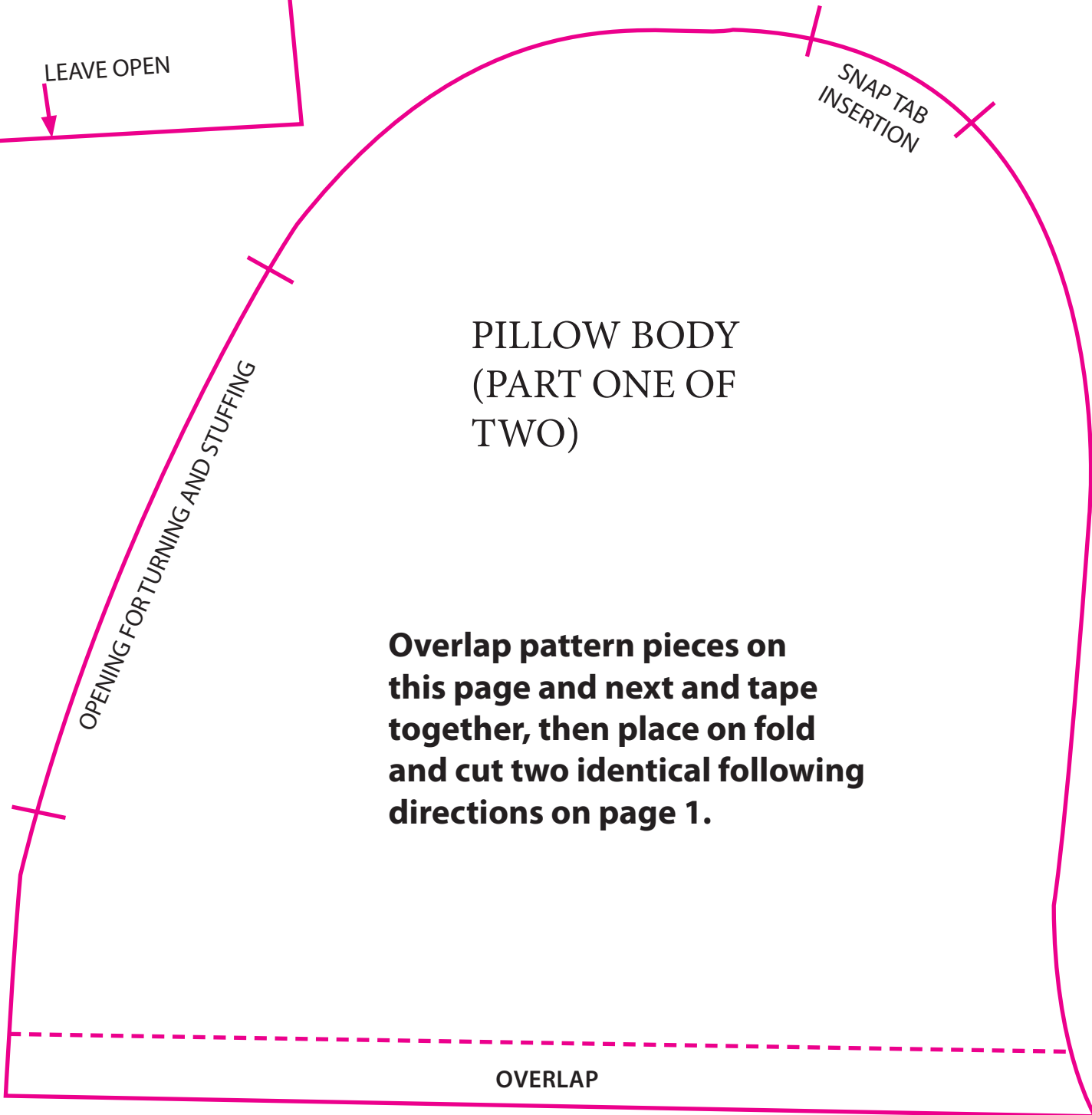
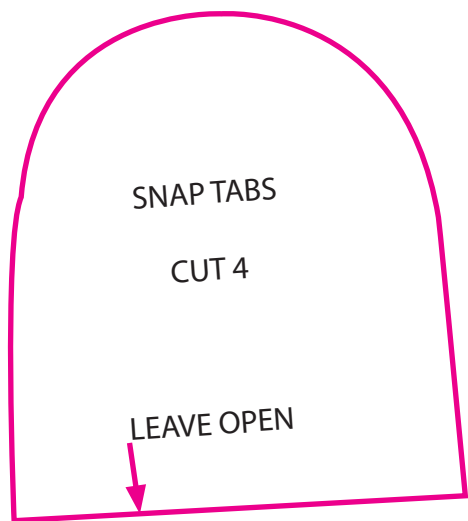
With right sides together, sew two snap tabs and turn inside out.

Place tabs on the marked site on the right side of pillow with tab and pillow edges matching.

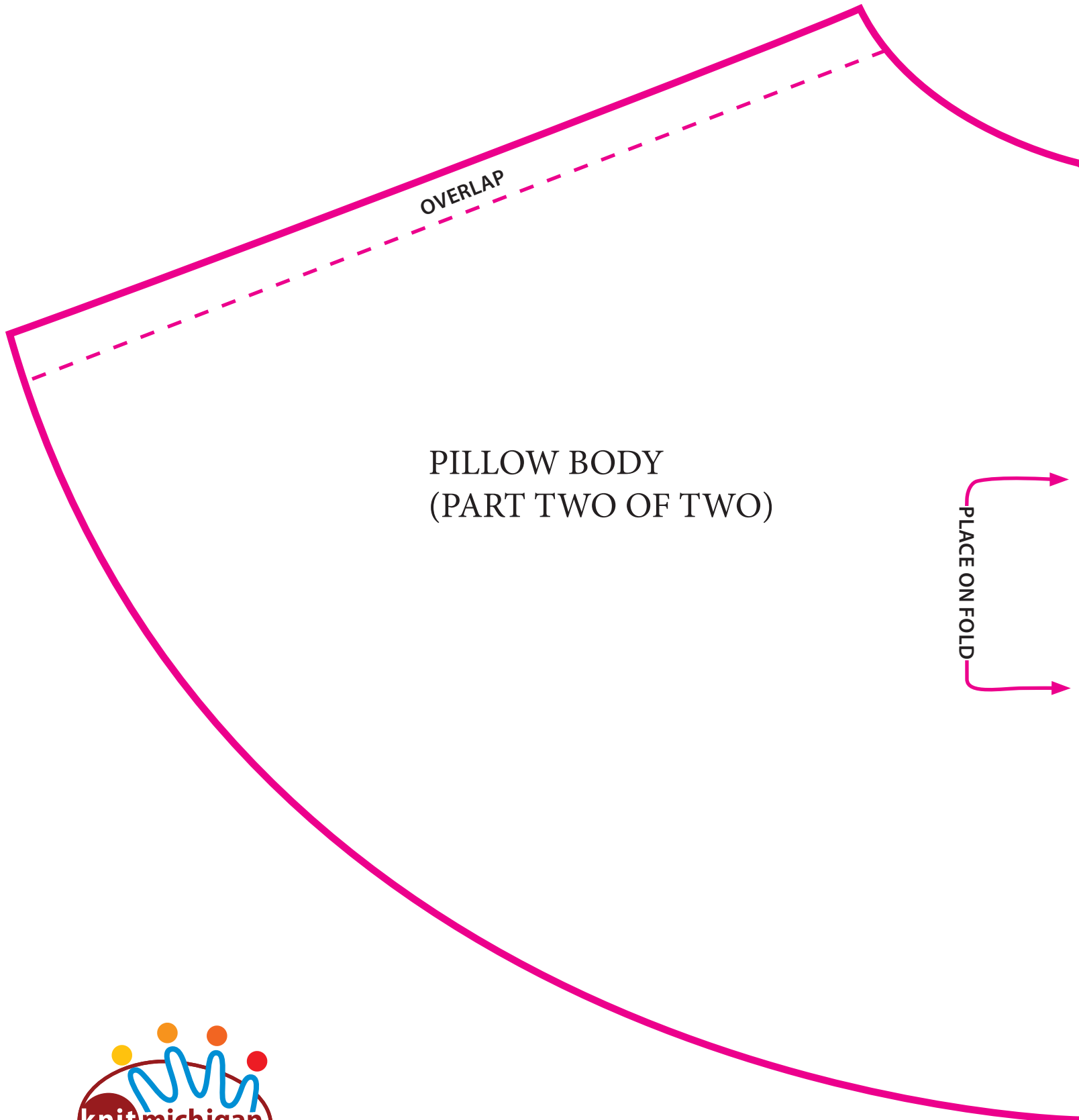
With right sides together, sew around the pillow, leaving an opening for turning and stuffing.

Turn out and stuff with polyfill.

Sew opening closed and apply snap to tabs.



**Overlap pattern pieces on this page and next and tape together, then place on fold and cut two identical following directions on page 1.**



OVERLAP

PILLOW BODY  
(PART TWO OF TWO)

PLACE ON FOLD

